



HAPPY

APRIL 2022

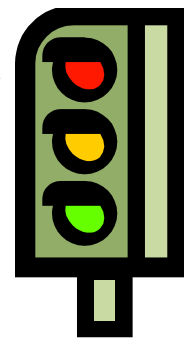
EASTER

NEWSLETTER

### TRAFFIC LIGHT LETTERS

The termly letters with your child's attendance for the last half term and year to date, will be coming home after the Easter holiday.

Reminder: we aim for every child to achieve at least 96% attendance each academic year and thank you for your continued support in helping Springfield reach this goal.



[www.springfieldcps.lancs.sch.uk](http://www.springfieldcps.lancs.sch.uk)

### HALF-TERM HEROES ASSEMBLY

On Friday 01 April for the children only. We hope to be able to invite parents/carers back in for the assemblies soon.



### EASTER CHURCH SERVICE

On Wednesday 20 April from 1.30pm at St Catherine's Church for the KS2 children [Y3 to Y6], parents/carers & grandparents are all invited.



### COMIC RELIEF

A big THANK YOU to everyone for their support, Springfield raised a magnificent £121.00



### SWIMMING YEAR 3

Swimming from the start of the Summer term from, Tuesday 19 April. Please remember to send swimwear; swim cap and a towel. No jewellery to be worn, not even studs, thank you. All girls to wear a swim cap.



### SAT's

SAT's for Year 6 will be held Monday to Thursday 09 to 12 May. Please do not book any dentist or doctors appointments during this week, and definitely no holidays! Thank you for your support.



### HEALTHY SCHOOLS

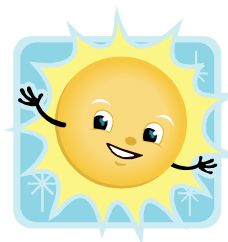
As mentioned in all our newsletters, please regularly check your child's hair for headlice and treat as soon as possible, thank you.



shutterstock.com • 424098556

## SUMMER/SCHOOL UNIFORM

Please note if you are buying summer uniform the colours are: Green gingham dress with white socks for girls in years R to Y5 and Blue gingham dress with white socks for girls in Y6 only or, uniform as worn the rest of the year. Full uniform can be seen on the Website under 'Parent Zone/School Uniform' Reminder all school sweatshirts/cardigans and ties are available to buy from Moonline Uniforms on Standish Street in Burnley



## SCHOOL MEAL NEW MENUS

Look out for the new menus coming home shortly for the summer term.



## SCHOOL MEALS

Meal patterns have now be changed as requested. The changes will commence on Tuesday 19 April and these are now 'fixed' for this term. The next meal change will be from Monday 6 June and you should notify Mrs Collett by Friday 20 May if you would like to move your child from packed lunches to school meals or vice versa.



***Please note all meal changes should be requested direct at the office with Mrs Collett and not via any other member of staff, thank you.***

## ABSENCE

If your child is not coming to school due to illness, then please ring school before 9.00am, telephone 437277. If we do not hear from you and cannot reach you by phone, then we will make a home visit, thank you.



## SCHOOL TEXTING SERVICE

We noticed when sending out our text messages during March, that some of the numbers are 'bouncing' back as 'failed'. In order that all text messages reach you, please make sure you update school with any changes to your mobile numbers. You should also inform us of any changes of address, thanks very much.



## KINGSWOOD CENTRE

Year 6 trip to Kingswood is from 01 to 03 July. We are still waiting for some parents to make full payment for the trip and would ask that you send in your final amounts outstanding as soon as possible.



All payments must be received by Friday 13 May 2022, thank you.

## HOLIDAYS: REMAINDER OF 2021/22 ACADEMIC YEAR

### HOLIDAY LIST EASTER 2022 TO SUMMER 2022

Easter Holiday Closes Friday 01 April  
Opens Tuesday 19 April

### SUMMER TERM begins Tuesday 19 April 2022

May Day Holiday Monday 02 May  
INSET DAYS Tuesday 03 & Wednesday 04 May  
Return Thursday 05 May

Mid-Term Holiday Closes Friday 27 May  
Opens Monday 06 June

Summer Holiday Closes Wednesday 20 July  
Opens Monday 05 September

### HOLIDAYS 2022/23

All term dates and holidays can be seen on the Springfield website under Parent Zone/Term Dates.



### UPCOMING TRIPS:

Year 1 on 19 May to Smithills Farm in Bolton



Year 5 on 27 May to Liverpool World Museum.



Contribution payments and any packed lunch orders must be received by Friday 13 May, thank you.



PLEASE REMEMBER NO  
SMOKING OR E-CIGARETTES  
AND NO DOGS ON THE  
SCHOOL PREMISES  
NO CARS OR TAXIS ON THE  
STAFF CAR PARK, THANK YOU

